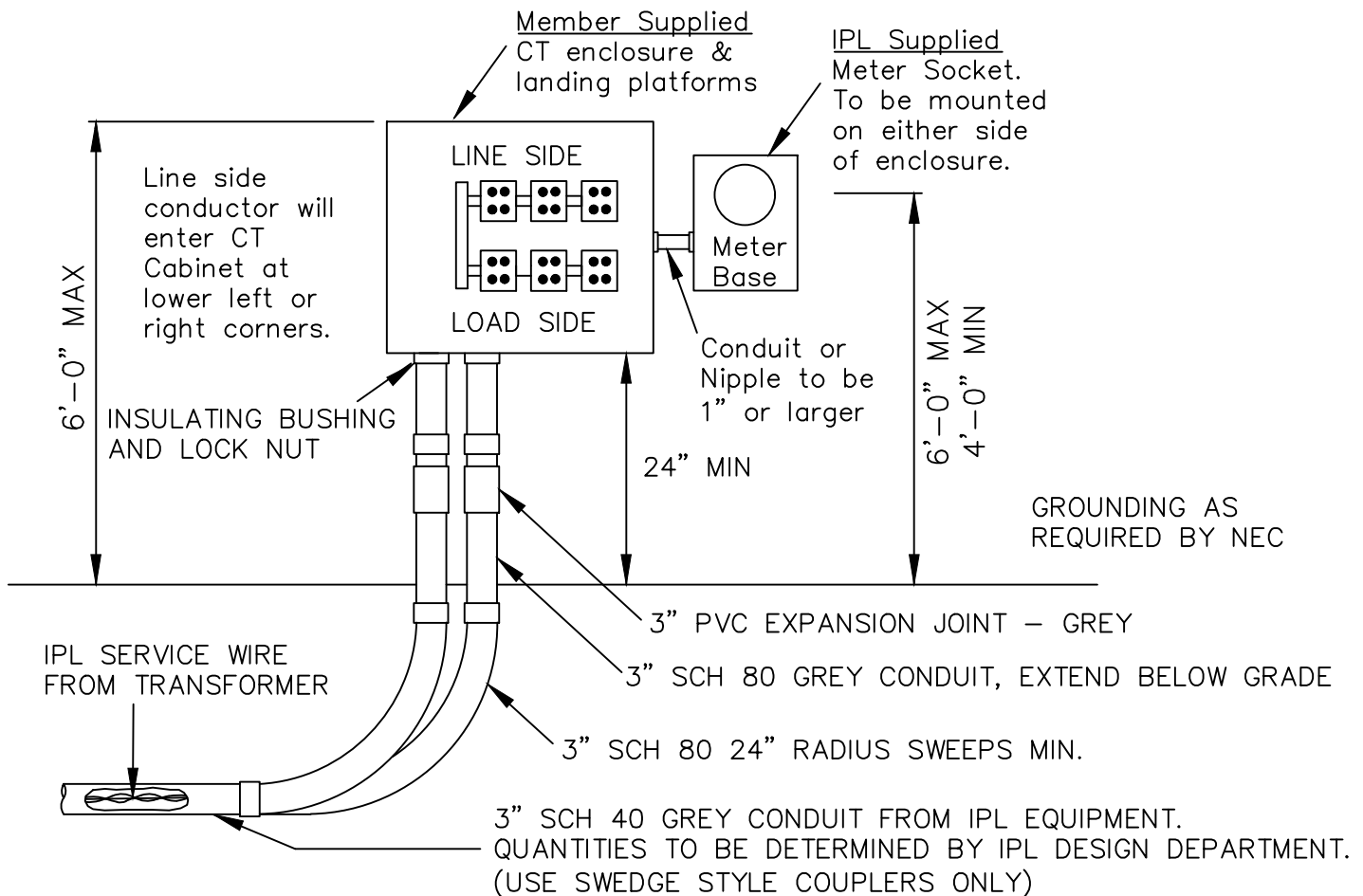




3 PHASE CT METERING  
201-800 AMP SERVICE

2024 EDITION



CT Enclosure

- Type 3R, ANSI 61 gray
- Removable hinged or non-hinged door(s) w/ sealing and locking provisions
- Service Ampacity: 201-800 amps
- Cabinet WxHxD: 36x36x11 (min)

CT Landing Platforms

Part #'s or Equivalent

- For bar type ANSI C12.11 CT's
- 600V, 50kA AIC
- Line & Load side Mechanical Lugs

Notes:

- 1) The member supplies and installs the current transformer enclosure, and CT landing platform.
- 2) IPL supplies and the customer installs the meter base. IPL supplies and installs the current transformers, instrument wiring and meter. Contact IPL for pre-wired meter base. (Included in IPL charges)
- 3) IPL will supply, install, and connect conductor to the line side only on UNDERGROUND services. The member supplies, installs and connects conductor on OVERHEAD services.
- 4) On four-wire, 120/240 Volt delta installations, an orange marker shall be used to identify that phase which is approximately 208 Volts to ground (high leg, wild leg or power leg). This shall be located on the right side of the meter socket, CT landing platform and in the middle of the main disconnect.